

# 980M

## WHEEL LOADER



**Engine Maximum Power**  
**Operating Weight**

**TIER 3/STAGE IIIA EQUIVALENT<sup>1</sup>**

307 kW (412 hp)  
30 090 kg (66,337 lb)

**TIER 4 FINAL/STAGE V<sup>2</sup>**

317 kW (425 hp)  
30 090 kg (66,337 lb)

<sup>1</sup> Meets Brazil MAR-1, UN ECE R96 Stage IIIA, and China Nonroad Stage III emission standards.  
<sup>2</sup> Meets U.S. EPA Tier 4 Final, either EU Stage V or EU Stage IV\*, Japan 2014, and Korea Tier 4 Final emission standards.  
\*Stage IV engines comply with the transition provisions of the EU nonroad emission regulation



# CAT<sup>®</sup> 980M

BOOST PRODUCTIVITY

The Cat<sup>®</sup> 980M Wheel Loader offers significant fuel savings while lowering long-term costs. Cat wheel loaders meet emission standards and are designed to improve fuel economy without interrupting performance. The reliability, durability, and versatility result in machines that are better built to meet your needs.



## WHEEL LOADERS MADE FOR MORE

Cat wheel loaders were built with efficiency in mind, offering you the best in:

- + RELIABILITY
- + DURABILITY
- + PRODUCTIVITY
- + FUEL EFFICIENCY

Experience higher performance while reducing costs and fuel consumption with Cat wheel loaders.





## GREATER PRODUCTIVITY

Applying proven technology and components means more dependable results for your work.

## BETTER FUEL EFFICIENCY

Deep system integration results in lower fuel consumption on average as compared to previous generation machines.

## EASIER TO MAINTAIN

Extended engine oil, engine oil filter, hydraulic filter, and transmission oil change intervals save you time, money, and energy.

All comparisons to previous generation.

## FAST PAYBACK

How **CAT PAYLOAD WITH PRODUCTION MEASUREMENT** paid for itself in less than a week for one quarry customer.\*



... **PAYBACK: 6 DAYS** ...

CALCULATE **YOUR** ESTIMATED PAYBACK TIME AT  
**MA-CATINFO.COM/PAYLOADCALCULATOR**

\*Your results will vary. Six-day payback and 17% productivity boost based on results from ma-catinfo.com/payloadcalculator

Not legal for trade.

# RELIABLE, PROVEN COMPONENTS & TECHNOLOGY

Staying ahead of the competition, Caterpillar offers a wide variety of cutting-edge technologies to get the job done quickly and easily with outstanding accuracy.



## COMPONENTS YOU CAN COUNT ON

Every machine is equipped with a combination of proven electronic, hydraulic cooling, and power train systems. Amplify your efficiency with better traction and enhanced work tools, delivering continuous productivity for your machine. Next generation fuel systems boost machine performance and fuel economy, lowering your overall costs and fuel consumption. You can rely on our components to save you time, money, and effort.





# PRODUCTIVE RESULTS

WORK SMART AND MOVE MORE

---

## PERFORMANCE SERIES BUCKETS

Easy-to-load Performance Series Buckets improve material retention and reduce dig times, significantly improving productivity and fuel efficiency, resulting in unsurpassed production capabilities with increased fill factors – ranging from 100% to 115%.

---

## ADVANCED POWERSHIFT TRANSMISSION

Featuring a lock-up clutch torque converter, our power trains deliver smooth shifting, fast acceleration, and speed on grade, amplifying your performance and fuel efficiency.

---

## BETTER TRACTION

Optional limited slip differentials increase traction, diminish tire scuffing, and further reduce your operating costs.

---

## OPTIMIZED RIDE CONTROL SYSTEM

Dual accumulator system enables a wide payload range and a better ride. Improves ride quality and smoothness over rough terrain, increasing your confidence, comfort, and efficiency, ensuring excellent material retention.

---

## AGGREGATE HANDLER

Aggregate packages are specialized offerings for loose aggregate rehandling applications. Payloads can be increased above other applications by installing larger buckets and counterweights in compliance with Caterpillar payload policy.

### THE RIGHT TECHNOLOGIES

Fine-tuned for the right applications:

- + BETTER FUEL ECONOMY, MAXIMIZED UPTIME, AND LOWER MAINTENANCE COSTS
- + HIGH POWER AND PERFORMANCE ACROSS A VARIETY OF APPLICATIONS
- + ENHANCED RELIABILITY THROUGH COMMONALITY AND SIMPLICITY OF DESIGN
- + WORLD-CLASS SUPPORT FROM THE CAT DEALER NETWORK
- + DURABLE DESIGNS WITH LONG LIFE TO OVERHAUL



## ENHANCED POWER TRAIN

Our power trains come standard with a lock-up clutch transmission, matching the engine power to increase fuel efficiency while delivering optimal performance.



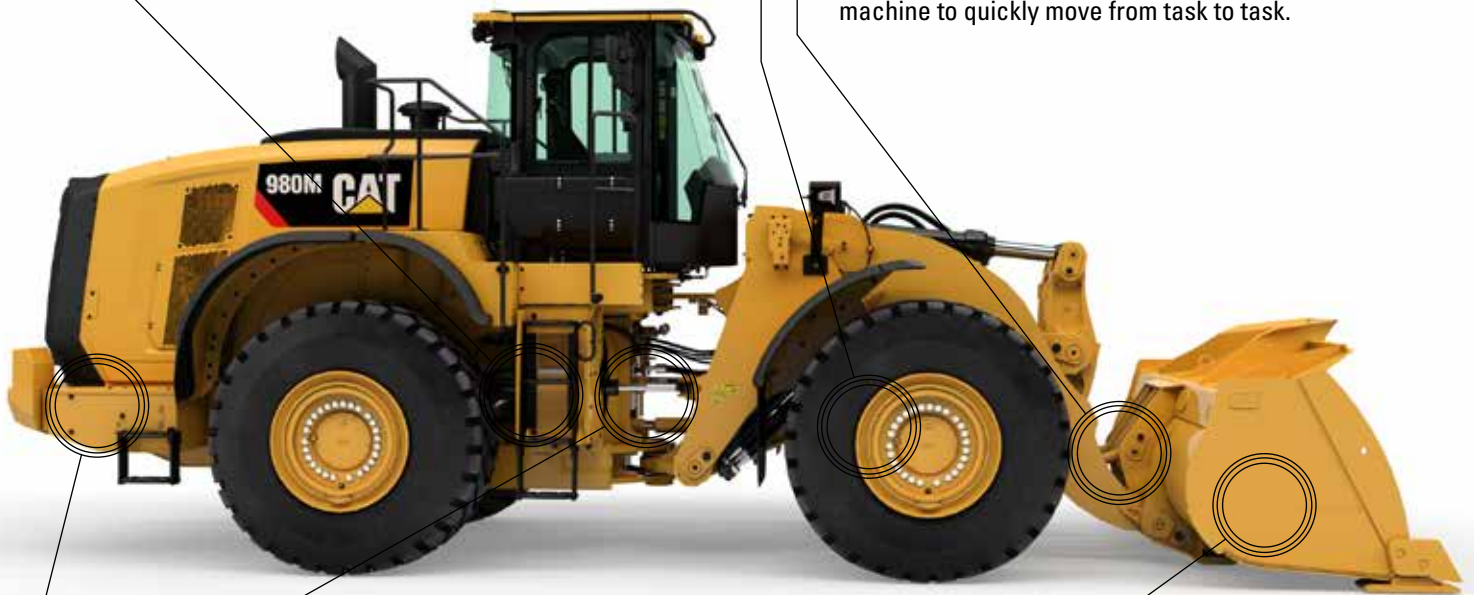
## DURABLE AXLES

M Series axles are designed to handle your extreme applications. The rear axle oscillates to  $\pm 13$  degrees for excellent stability and traction on even the roughest terrain.



## QUICK COUPLERS AND WORK TOOLS

For versatility, buckets and components can be changed without leaving the cab, allowing the machine to quickly move from task to task.



## OPTIMIZED HYDRAULICS

Our hydraulic systems come equipped with a monoblock main hydraulic valve. This design reduces weight while decreasing leak points by 40%.



## DURABLE FRAMES

The robotically welded two-piece structural frame absorbs impact associated with excavation and loading, while the hitch system provides high bearing force capacity.



## EXTENSIVE RANGE OF ATTACHMENTS

Do more jobs with one machine. An extensive range of work tools and bucket styles are available to customize these machines for your operation.

# INCREASE PRODUCTIVITY AND EFFICIENCY UP TO 15%

## CAT® CONNECT TECHNOLOGY



Technology gives you the edge. Operators of all experience levels will dig and load with more confidence, speed, and accuracy. The result? Better productivity and lower costs.



### PAYLOAD

Provides you accurate weighing\* of the materials you are loading and hauling. Payload data is displayed in real-time to improve productivity and reduce overloading. Optional Advanced Productivity subscription provides comprehensive actionable information to help you manage and improve the productivity and profitability of your operations.



### DETECT

Enhances awareness of the environment around working equipment and provides alerts to help keep people and assets safe on the jobsite.



### LINK

Wirelessly connects you to your equipment, giving you access to essential information you need to know to run your business. Gain valuable insight into how your machine or fleet is performing, allowing you to make timely, fact-based decisions that can boost jobsite efficiency and productivity.

\*Not legal for trade.



# REAL-TIME INFORMATION FROM CAT LINK TAKES THE GUESSWORK OUT OF MANAGING YOUR EQUIPMENT

---

Cat Link hardware (Product Link™) and software (VisionLink®) work together to put equipment information at your fingertips. Get real-time access to information on every machine in your fleet on any jobsite—no matter the size of the operation or the brands of equipment you run.



## **PRODUCT LINK**

Track asset location, hours, fuel usage, diagnostic codes, idle time, and more to improve your productivity and lower your operating costs. Cellular connectivity comes standard. Satellite connectivity is available.



## **VISIONLINK**

Using the online VisionLink interface, you can see a common, collective view of your information, making it easier to manage a mixed fleet and make informed decisions about your equipment.



## **MY.CAT.COM**

You can also access Caterpillar and Cat dealer information at my.cat.com. My.cat.com gives you access to PM schedules, parts and service records, warranty coverage, and more—with a single login. Plus, you can link directly to your VisionLink account.



# SUPERIOR FUEL EFFICIENCY



## ENGINE AND EMISSIONS

---

High power density and fuel efficiency set our engines apart. Certified to meet emission standards, our engines feature Cat electronics, a fuel injection process, and air-management systems.

## EFFICIENT ENGINE STRUCTURE

---

Significantly improved performance and fuel economy through engine speed and overall system heat load reduction.

## ADVANCED SYSTEM INTEGRATION

---

Lower fuel consumption resulting from the system integration of the engine and emissions system, power train, hydraulic system, and cooling system.

## PRODUCTIVE ECONOMY MODE

---

Automatically control engine torque and speed based on the machine's power train load, placing them in the most efficient operating range for fuel and performance.

---

### NEXT GENERATION FUEL SYSTEMS

The HEUI™ fuel systems boost performance and reduce soot for the engine. Cat injection timing regulates the fuel injection process through a series of timed microbursts, providing more control of combustion for the cleanest, most efficient fuel burn.

---

### CAT NO<sub>x</sub> REDUCTION SYSTEM

The Cat NO<sub>x</sub> Reduction System (NRS) captures and cools a small quantity of exhaust gas, then routes it back into the combustion chamber where it reduces temperatures and emissions (Tier 4 Final, Stage V only).

---

### AFTERTREATMENT TECHNOLOGIES

The Selective Catalytic Reduction (SCR) has been added to our demonstrated aftertreatment solution, fully meeting emission standards (Tier 4 Final, Stage V only).

# EASY TO OPERATE

SAFE. COMFORTABLE. ACCESSIBLE.

A quiet operating environment and intuitive controls help to reduce the fatigue, stresses, sounds, and temperatures of a demanding job.



## CAB ACCESS

Inclined steps and convenient grab handles ease accessibility to the operating space.



## BETTER RIDE CONTROL

The next generation of ride control works as a shock absorber, improving ride quality over rough terrain.



## GREATER VISIBILITY

Extended windows enhance visibility while convex and spot mirrors extend the driver's view on the sides and rear.



## ADVANCED SEAT

The next generation of operator comfort includes an easily adjustable seat with updated styling and a revolutionary suspension system. It comes in three trim levels and can be equipped with a 4-point harness.



## NOISE REDUCTION

Sound-suppression, seals, and viscous cab mounts decrease noise for a quieter work environment.



## JOYSTICK STEERING

The seat-mounted electro-hydraulic joystick steering system provides precision control and dramatically reduces arm fatigue, resulting in excellent comfort and accuracy.



# SMARTER CONTROLS

## AT YOUR FINGERTIPS

---

### TOUCHSCREEN DISPLAY

Easy interface, machine controls, rear vision camera, intuitive navigation, and integrated Cat Production Measurement payload system let operators modify and monitor their machines instantly.



---

### CENTRAL DISPLAY

Featuring a large text box with information about machine operation, features, system troubleshooting, and calibration, the central display is equipped with LED indicators and analog gauges, allowing the operator to easily analyze key systems.



---

### CONTROL PANEL

With easy-to-reach controls and touchscreen display, the LED switch panel provides immediate access to frequently required functions, even while wearing gloves.





## EASIER MAINTENANCE MORE SAVINGS

Cat wheel loaders are easy to maintain and service, eliminating any potential waste of time or money. Major components are rebuildable, giving the machine a second life, and often a third life.

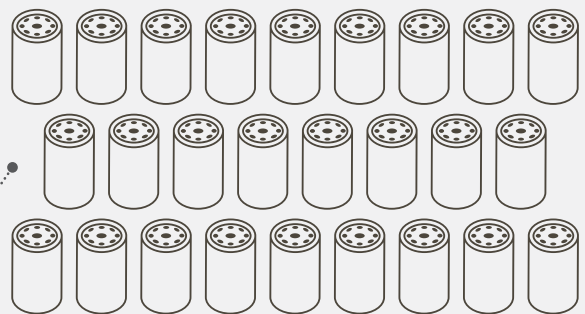
### KEY FEATURES SAVING YOU TIME, MONEY, AND ENERGY:

- + Extended engine oil and engine oil filter change interval up to 1,000 hours (Tier 4 Final, Stage V only)
- + Extended hydraulic filter change interval up to 1,000 hours
- + Extended transmission oil change interval up to 2,000 hours
- + Optional integrated Cat autolube system
- + Remote flash support
- + Longer tire life with on-the-go traction aids
- + Safe and simple preventive maintenance



## LOWER MAINTENANCE COSTS

SAVE ON MAINTENANCE  
BY USING FEWER FILTERS



Extended filter change intervals mean using fewer filters over the machine's lifetime.



# DO MORE JOBS

## VERSATILE ATTACHMENTS AND COUPLERS

For worksites that demand more, you need a wheel loader that is purpose-built for the job. Cat work tools are engineered to handle all of your specific application needs.



### QUICK COUPLERS AND WORK TOOL ATTACHMENTS

A wheel loader equipped with a Cat Fusion™ quick coupler system is a much more versatile machine. Buckets and work tools can be changed without leaving the cab – allowing the machine to quickly move from task to task. Consult your local dealer for availability of a variety of specialty buckets and forks.

### HIGH LIFT LINKAGE

The optional high lift linkage offers increased hinge pin height to load more easily in a variety of applications with any type of bucket or fork.

### STANDARD Z-BAR LINKAGE

The proven Z-bar linkage combines digging efficiency with sharp visibility, resulting in excellent excavation, high breakout forces, and superior production capabilities.

### PERFORMANCE SERIES BUCKETS

Performance Series Buckets use a system-based approach to balance bucket shape with the machine's lift and tilt capacity, weight, and linkage. A variety of work tools and bucket styles are available for a range of applications, including general purpose, material handling, heavy duty rock, and coal-style buckets.

- + Easy loading
- + Fuel efficient
- + Carry more
- + Lower operating costs
- + Higher productivity

#### Aggregate Handler

Aggregate packages make rehandling loose aggregate less stressful on the machine, which means payloads can be increased with the installation of larger buckets and counterweights.

#### Industrial and Waste Handler

Integrated guards to preserve your machine from the harsh environment of a scrap or waste handling application. The machine guarding is purpose built to protect major components and systems to ensure durability and reliability.

#### Forestry Arrangement

The forestry package includes a heavy-duty linkage, a larger tilt cylinder, and a heavier counterweight to safely handle the larger loads met in logging and mill yard applications.

# TECHNICAL SPECIFICATIONS

See [cat.com](http://cat.com) for complete specifications.

| ENGINE – TIER 3/STAGE IIIA EQUIVALENT     |          |                     |  |
|---|----------|---------------------|--|
| Engine Model                              | Cat C13  |                     |  |
| Maximum Power @ 1,800 rpm – SAE J1995     | 307 kW   | 412 hp              |  |
| Maximum Power @ 1,800 rpm – ISO 14396     | 303 kW   | 406 hp              |  |
| Maximum Net Power @ 1,800 rpm – SAE J1349 | 278 kW   | 373 hp              |  |
| Maximum Net Power @ 1,800 rpm – ISO 9249  | 278 kW   | 373 hp              |  |
| Peak Gross Torque (1,300 rpm) – SAE J1995 | 2192 N·m | 1,617 lbf·ft        |  |
| Peak Gross Torque (1,300 rpm) – ISO 14396 | 2172 N·m | 1,602 lbf·ft        |  |
| Maximum Net Torque (1,000 rpm)            | 2040 N·m | 1,505 lbf·ft        |  |
| Displacement                              | 12.5 L   | 763 in <sup>3</sup> |  |

| ENGINE – TIER 4 FINAL/STAGE V             |          |                     |  |
|---|----------|---------------------|--|
| Engine Model                              | Cat C13  |                     |  |
| Maximum Power @ 1,700 rpm – SAE J1995     | 317 kW   | 425 hp              |  |
| Maximum Power @ 1,700 rpm – ISO 14396     | 313 kW   | 420 hp              |  |
| Maximum Net Power @ 1,700 rpm – SAE J1349 | 288 kW   | 386 hp              |  |
| Maximum Net Power @ 1,700 rpm – ISO 9249  | 288 kW   | 386 hp              |  |
| Peak Gross Torque (1,200 rpm) – SAE J1995 | 2206 N·m | 1,627 lbf·ft        |  |
| Peak Gross Torque (1,200 rpm) – ISO 14396 | 2182 N·m | 1,609 lbf·ft        |  |
| Maximum Net Torque (1,100 rpm)            | 2054 N·m | 1,515 lbf·ft        |  |
| Displacement                              | 12.5 L   | 763 in <sup>3</sup> |  |

| WEIGHTS          |           |           |  |
|------------------|-----------|-----------|--|
| Operating Weight | 30 090 kg | 66,337 lb |  |

- Weight based on a machine configuration with Michelin 29.5R25 XLDD1 L4 radial tires, full fluids, operator, standard counterweight, cold start, roading fenders, Product Link, open differential axles, secondary steering, sound suppression, and a 5.4 m<sup>3</sup> (7.1 yd<sup>3</sup>) GP bucket with BOCE.

| BUCKET CAPACITIES |                             |                               |  |
|-------------------|-----------------------------|-------------------------------|--|
| Bucket Range      | 4.2-<br>12.2 m <sup>3</sup> | 5.25-<br>16.0 yd <sup>3</sup> |  |

| TRANSMISSION |           |          |           |           |          |
|--------------|-----------|----------|-----------|-----------|----------|
| Forward 1    | 6.9 km/h  | 4.3 mph  | Reverse 1 | 7.8 km/h  | 4.8 mph  |
| Forward 2    | 13.3 km/h | 8.3 mph  | Reverse 2 | 15.2 km/h | 9.4 mph  |
| Forward 3    | 23.5 km/h | 14.6 mph | Reverse 3 | 26.9 km/h | 16.7 mph |
| Forward 4    | 39.5 km/h | 24.5 mph | Reverse 4 | 39.5 km/h | 24.5 mph |

- Maximum travel speed in standard vehicle with empty bucket and standard L4 tires with 933 mm (37 in) roll radius.

| SOUND   |  |           |  |
|---|--|-----------|--|
| With Cooling Fan Speed at Maximum Value:      |  |           |  |
| Operator Sound Pressure Level (ISO 6396:2008) |  |           |  |
| Tier 3/Stage IIIA Equivalent                  |  | 75 dB(A)  |  |
| Tier 4 Final/Stage V                          |  | 72 dB(A)  |  |
| Exterior Sound Power Level (ISO 6395:2008)    |  |           |  |
|   |  | 112 dB(A) |  |
| Exterior Sound Pressure Level (SAE J88:2013)  |  |           |  |
|   |  | 78 dB(A)* |  |

\*Distance of 15 m (49.2 ft), moving forward in second gear ratio.

|   |  |              |  |
|---|--|--------------|--|
| With Cooling Fan Speed at 70% of Maximum Value:** |  |              |  |
| Operator Sound Pressure Level (ISO 6396:2008)     |  |              |  |
|   |  | 72 dB(A)     |  |
| Exterior Sound Power Level                        |  |              |  |
|   |  | 109 dB(A)*** |  |

\*\*For machines in European Union countries and in countries that adopt the "EU Directives."

\*\*\*European Union Directive "2000/14/EC" as amended by "2005/88/EC."

| OPERATING SPECIFICATIONS                                   |           |            |  |
|--|-----------|------------|--|
| Static Tipping Load – Full 40° Turn – with Tire Deflection | 19 565 kg | 43,133 lb  |  |
| Static Tipping Load – Full 40° Turn – No Tire Deflection   | 20 796 kg | 45,847 lb  |  |
| Breakout Force   | 224 kN    | 50,357 lbf |  |

- For a machine configuration as defined under "Weight."

- Full compliance to ISO 143971:2007 Sections 1 thru 6, which requires 2% verification between calculations and testing.

| SERVICE REFILL CAPACITIES              |       |           |  |
|--|-------|-----------|--|
| Fuel Tank                              | 426 L | 112.5 gal |  |
| DEF Tank (Tier 4/Stage V)              | 21 L  | 5.5 gal   |  |
| Cooling System (Tier 4/Stage V)        | 53 L  | 14 gal    |  |
| Cooling System (Tier 3)                | 45 L  | 12 gal    |  |
| Crankcase                              | 37 L  | 9.8 gal   |  |
| Transmission                           | 77 L  | 20.3 gal  |  |
| Differentials and Final Drives – Front | 84 L  | 22 gal    |  |
| Differentials and Final Drives – Rear  | 84 L  | 22 gal    |  |
| Hydraulic Tank                         | 153 L | 40 gal    |  |

| HYDRAULIC SYSTEM                |              |             |  |
|---------------------------------|--------------|-------------|--|
| Implement System:               |              |             |  |
| Maximum Pump Output (2,250 rpm) | 449 L/min    | 119 gal/min |  |
| Maximum Operating Pressure      | 34 300 kPa   | 4,975 psi   |  |
| Hydraulic Cycle Time – Total    | 10.1 Seconds |             |  |

| DIMENSIONS  |               |        |            |        |
|---|---------------|--------|------------|--------|
|   | Standard Lift |        | High Lift  |        |
| Height to Top of Hood                             | 3110 mm       | 10'3"  | 3110 mm    | 10'3"  |
| Height to Top of Exhaust Pipe                     | 3746 mm       | 12'4"  | 3746 mm    | 12'4"  |
| Height to Top of ROPS                             | 3813 mm       | 12'7"  | 3813 mm    | 12'7"  |
| Ground Clearance                                  | 453 mm        | 1'5"   | 453 mm     | 1'5"   |
| Center Line of Rear Axle to Edge of Counterweight | 2469 mm       | 8'2"   | 2469 mm    | 8'2"   |
| Center Line of Rear Axle to Hitch                 | 1900 mm       | 6'3"   | 1900 mm    | 6'3"   |
| Wheelbase   | 3800 mm       | 12'6"  | 3800 mm    | 12'6"  |
| Overall Length (without bucket)                   | 7964 mm       | 26'2"  | 8164 mm    | 26'10" |
| Hinge Pin Height at Maximum Lift                  | 4539 mm       | 14'10" | 4760 mm    | 15'7"  |
| Hinge Pin Height at Carry                         | 621 mm        | 2'1"   | 678 mm     | 2'3"   |
| Lift Arm Clearance at Maximum Lift                | 3795 mm       | 12'5"  | 4010 mm    | 13'1"  |
| Rack Back at Maximum Lift                         | 61 degrees    |        | 61 degrees |        |
| Rack Back at Carry Height                         | 48 degrees    |        | 48 degrees |        |
| Rack Back at Ground                               | 40 degrees    |        | 39 degrees |        |
| Maximum Width over Tires                          | 3296 mm       | 10'10" | 3296 mm    | 10'10" |
| Tread Width                                       | 2440 mm       | 8'0"   | 2440 mm    | 8'0"   |

- All dimensions are approximate and based on Michelin 29.5R25 XLDD1 L4 radial tires.

| AIR CONDITIONING SYSTEM   |  |
|---|--|
| The air conditioning system on this machine contains the fluorinated greenhouse gas refrigerant R134a (Global Warming Potential = 1430). The system contains 1.6 kg of refrigerant which has a CO <sub>2</sub> equivalent 2.288 metric tonne. |  |



# STANDARD & OPTIONAL EQUIPMENT

Standard and optional equipment may vary. Consult your Cat dealer for details.

| OPERATOR ENVIRONMENT   | STANDARD | OPTIONAL |
|--|----------|----------|
| Cab, pressurized, sound suppression                                | •        |          |
| Door, remote opening system  |          | •        |
| Touchscreen display  | •        |          |
| EH: Controls, joystick, parking brake                              | •        |          |
| Seat, cloth, air suspension  | •        |          |
| Seat, suede/cloth, air suspension, heated                          |          | •        |
| Seat, leather/cloth, air suspension, heated/cooled                 |          | •        |
| Radio, AM/FM/CD/USB/MP3, Bluetooth® with Satellite Sirius and XM   |          | •        |
| Visibility: Mirrors, rear vision camera                            | •        |          |
| Air conditioner, heater, defroster (auto temp, fan)                | •        |          |
| Windows, front, heavy duty, or full guards                         |          | •        |
| CAT CONNECT TECHNOLOGIES   | STANDARD | OPTIONAL |
| Link: Product Link   | •        |          |
| Link: VIMS™  |          | •        |
| Detect: Rear vision camera   | •        |          |
| Detect: Cat Rear Object Detection                                  |          | •        |
| Machine Security System  |          | •        |
| Printer, Aggregate Autodig, Cat Production Measurement 2.0         |          | •        |
| POWER TRAIN  | STANDARD | OPTIONAL |
| Cat C13 engine, meets emission standards                           | •        |          |
| Emissions: CEM, DPF, DEF (Tier 4 Final/Stage V)                    | •        |          |
| Fuel priming pump, fuel/water separator                            | •        |          |
| Radiator, high debris, wide fin spacing                            |          | •        |
| Fan, variable pitch fan, auto/manual control                       |          | •        |
| Torque converter, lock up clutch                                   | •        |          |
| Precleaner, engine air intake                                      | •        |          |
| Brakes, full hydraulic, Integrated Braking System, wear indicators | •        |          |
| Axles, ecology drain   | •        |          |
| Axles, limited slip differentials                                  |          | •        |

| HYDRAULICS  | STANDARD | OPTIONAL |
|---|----------|----------|
| Hydraulic system, steering, load sensing  | •        |          |
| Ride Control, 2V  | •        |          |
| 3 <sup>rd</sup> function w/ Ride Control  |          | •        |
| Oil sampling valves, hoses, Cat XT™   | •        |          |
| ELECTRICAL  | STANDARD | OPTIONAL |
| Starter, electric, heavy duty   | •        |          |
| Starting and charging system, 24V   | •        |          |
| Cold start, 120V, 240V  |          | •        |
| Lights: Halogen, 4 work lights, 2 roading lights, 2 rear vision lights              | •        |          |
| Lights: Additional 4 halogen work lights OR replace full lighting with LED packages |          | •        |
| MONITORING SYSTEM   | STANDARD | OPTIONAL |
| Gauges: Speedometer, temperature, fuel level, DEF level                             | •        |          |
| Indicators: Regeneration, temperature, pressure, battery, oil, DEF                  | •        |          |
| ADDITIONAL EQUIPMENT  | STANDARD | OPTIONAL |
| Cat Autolube System   |          | •        |
| Fenders, roading  |          | •        |
| Guard, power train  |          | •        |
| Oil change, high speed engine   |          | •        |
| Precleaner, turbine   |          | •        |
| Precleaner, trash   |          | •        |
| Wheel chocks  |          | •        |
| LINKAGE   | STANDARD | OPTIONAL |
| High Lift   |          | •        |
| Forestry  |          | •        |
| Quick Coupler Ready   |          | •        |
| Linkage, Z-bar, cast crosstube/tilt lever   | •        |          |
| Kickout, lift and tilt, automatic   | •        |          |
| OTHER OPTIONAL CONFIGURATIONS   | STANDARD | OPTIONAL |
| Aggregate Handler   |          | •        |
| Block Handler   |          | •        |
| Forestry  |          | •        |
| Industrial and Waste Handler  |          | •        |
| Steel Mill  |          | •        |

Not all features are available in all regions. Please check with your local Cat dealer for specific offering availability in your area.

For additional information, refer to the Technical Specifications brochures for the 980M model available at [www.cat.com](http://www.cat.com) or your Cat dealer.



For more complete information on Cat products, dealer services and industry solutions, visit us on the web at [www.cat.com](http://www.cat.com)

VisionLink® is a trademark of Trimble Navigation Limited, registered in the United States and in other countries.

Materials and specifications are subject to change without notice. Featured machines in photos may include additional equipment. See your Cat dealer for available options.

© 2019 Caterpillar. All Rights Reserved. CAT, CATERPILLAR, LET'S DO THE WORK, their respective logos, VIMS, Fusion, XT, Cat Connect, Product Link, HEUI, "Caterpillar Yellow", the "Power Edge" and Cat "Modern Hex" trade dress as well as corporate and product identity used herein, are trademarks of Caterpillar and may not be used without permission.

[www.cat.com](http://www.cat.com) [www.caterpillar.com](http://www.caterpillar.com)

AEXQ2445-00  
2019 Product Update  
Global

